

ANNUAL REPORT



2019

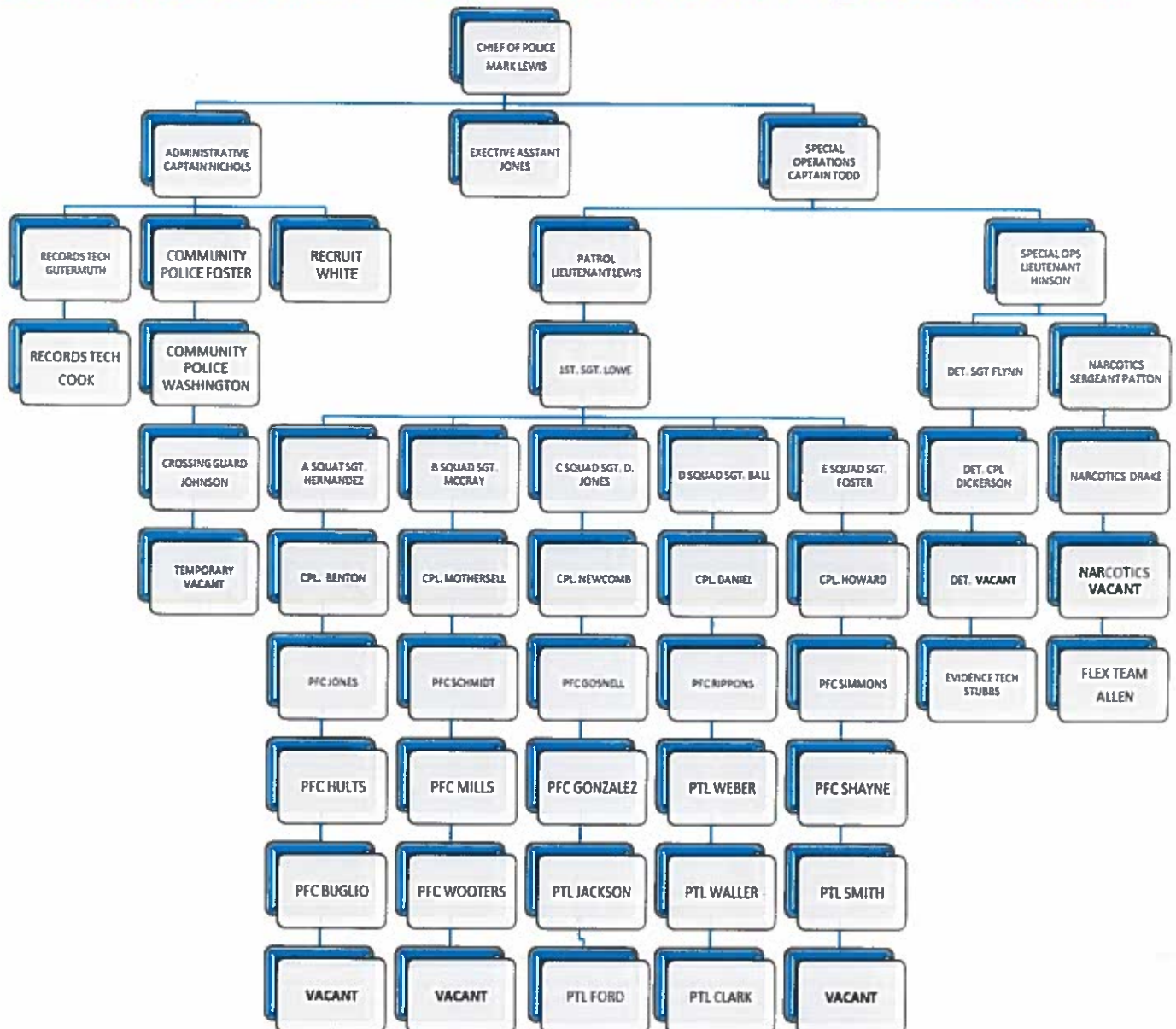
Chief Mark K. Lewis, N.A.



MISSION STATEMENT

The Cambridge Police Department is committed to excellence in law enforcement and is dedicated to the people, traditions and diversity of our City. In order to protect life and property, prevent crime, reduce the fear of crime, and improve the quality of life, we will build and strengthen community partnerships to provide service with understanding, response with compassion, performance with integrity and law enforcement with vision.

ORGANIZATIONAL CHART





2019 PART 1 CRIMES

MURDER – 2

RAPE – 10

ROBBERY – 18

AGGREGATED ASSAULT – 87

BURGLARY – 141

THEFT – 507

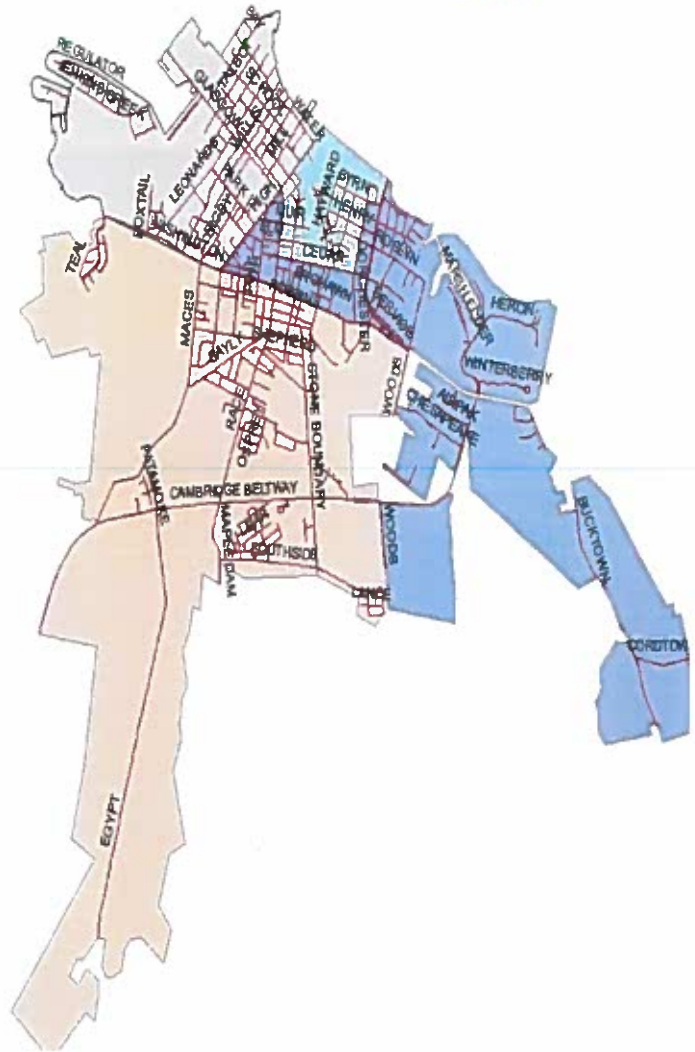
MOTOR VEHICLE THEFT – 11

TOTAL PART ONE CRIMES - 776



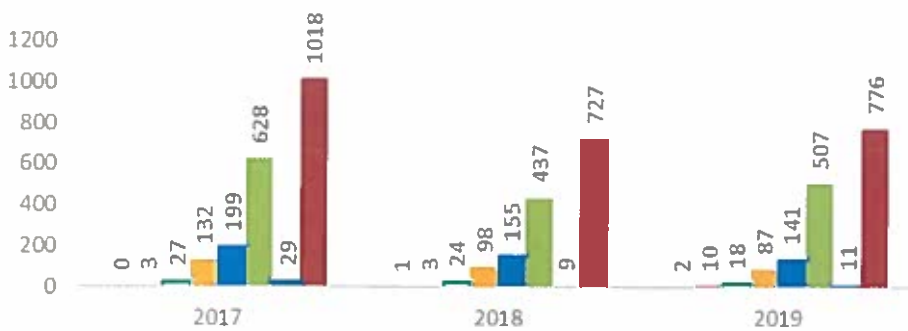
PART 1 CRIME – CITY WIDE

PART 1 CRIME	3 YEAR COMPARISON			2018/2019 CHANGE
	2017	2018	2019	
MURDER/MANS	0	1	2	100%
RAPE	3	3	10	233%
ROBBERY	27	24	18	-25%
AGG. ASSAULT	132	98	87	-11%
BURGLARY	199	155	141	-9%
THEFT	628	437	507	16%
M/V THEFT	29	9	11	22%
TOTAL PART ONE	1018	727	776	7%



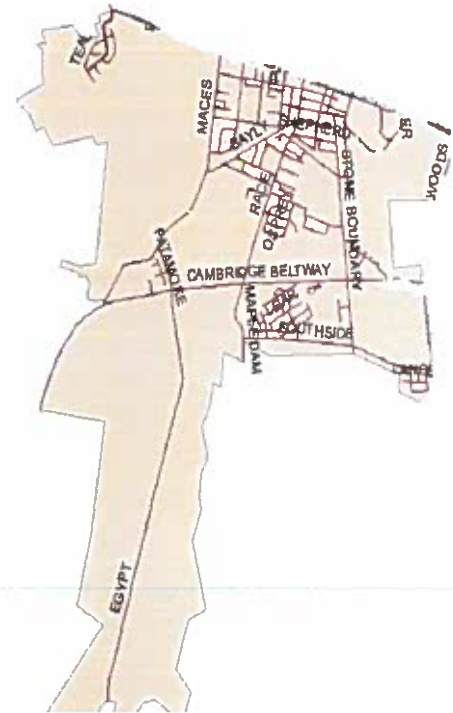
PART 1 CRIMES

- MURDER/MANS
- RAPE
- ROBBERY
- AGG. ASSAULT
- BURGLARY
- THEFT
- M/V THEFT
- TOTAL PART ONE

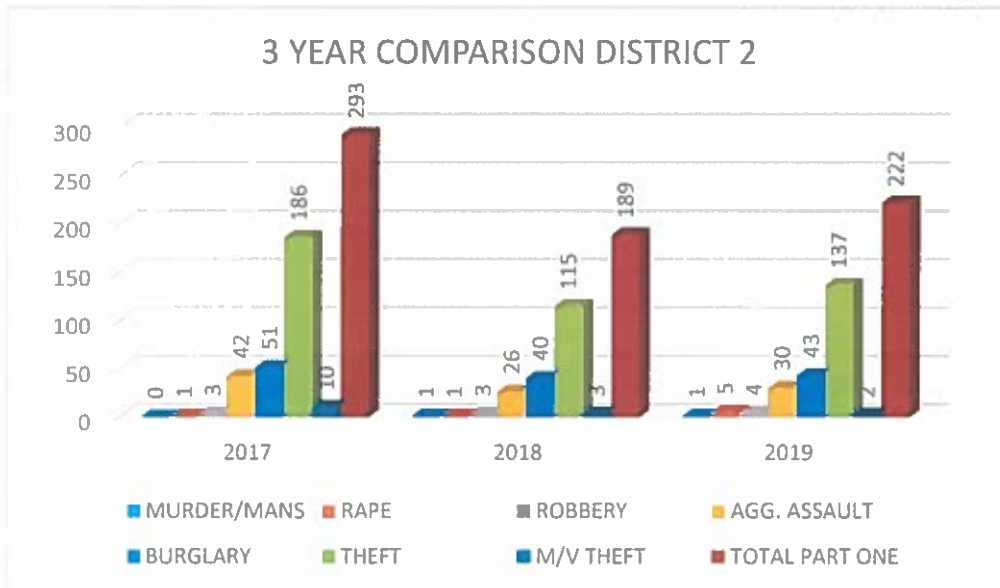


PART 1 CRIME - DISTRICT 2

South of Washington Street from Teal Lane to Woods Road

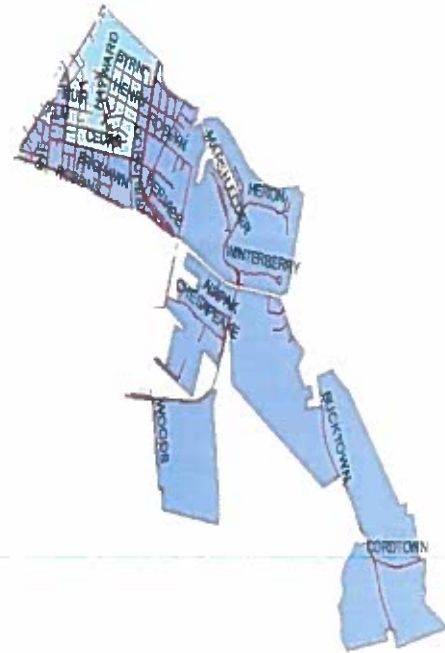


PART 1 CRIME	3 YEAR COMPARISON			2018/2019 CHANGE
	2017	2018	2019	
MURDER/MANS	0	1	1	0%
RAPE	1	1	5	400%
ROBBERY	3	3	4	33%
AGG. ASSAULT	42	26	30	15%
BURGLARY	51	40	43	8%
THEFT	186	115	137	19%
M/V THEFT	10	3	2	-33%
TOTAL PART ONE	293	189	222	18%

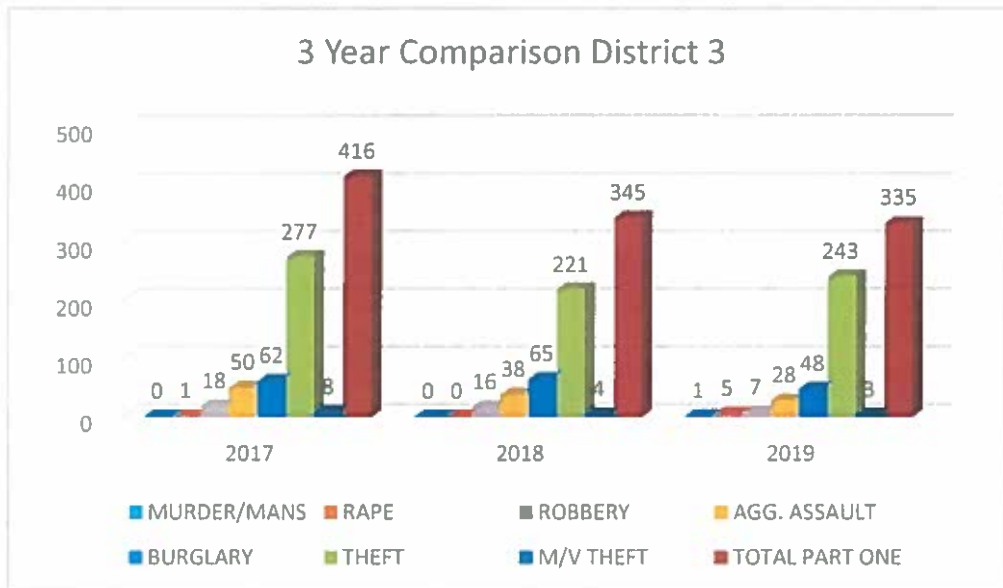


PART 1 CRIME - DISTRICT 3

High Street, across Ocean Gateway to Bucktown Road



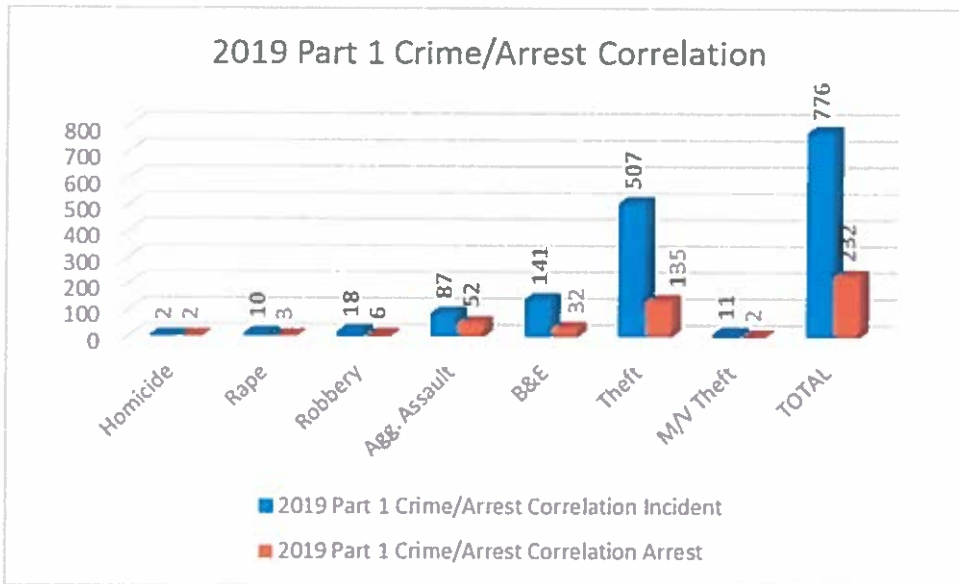
PART 1 CRIME	3 YEAR COMPARISON District 3			2018/2019 CHANGE
	2017	2018	2019	
MURDER/MANS	0	0	1	100%
RAPE	1	0	5	500%
ROBBERY	18	16	7	-56%
AGG. ASSAULT	50	38	28	-26%
BURGLARY	62	65	48	-26%
THEFT	277	221	243	10%
M/V THEFT	8	4	3	-25%
TOTAL PART ONE	416	345	335	-3%





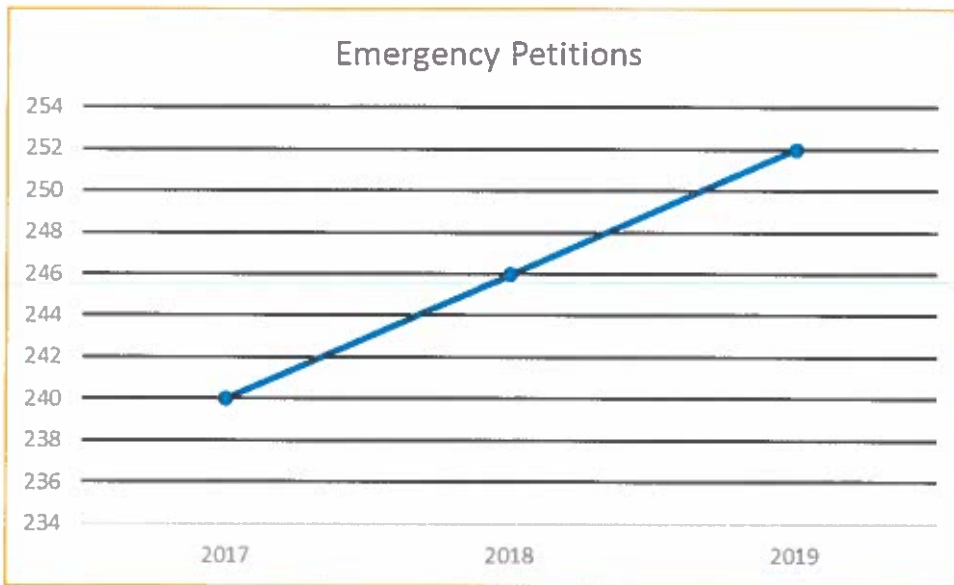
PART 1 CRIME/ARREST CORRELATION

2019 Part 1 Crime/Arrest Correlation			
	Incident	Arrest	%
Homicide	2	2	100.0%
Rape	10	3	30.0%
Robbery	18	6	33.3%
Agg. Assault	87	52	59.8%
B&E	141	32	22.7%
Theft	507	135	26.6%
M/V Theft	11	2	18.2%
TOTAL	776	232	29.9%

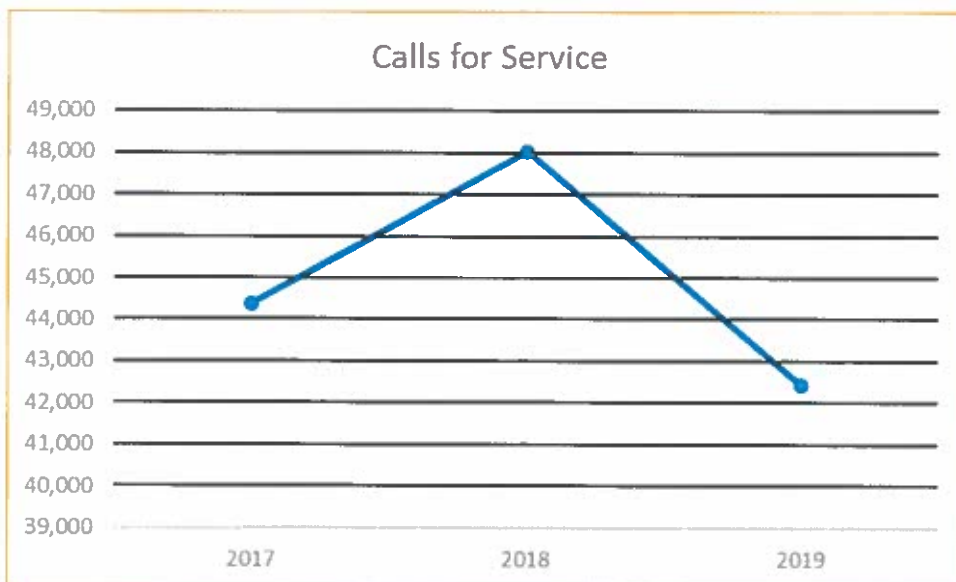


OTHER DATA

Emergency Petitions are the process by which we encounter a person who may be threat to themselves or others and refuses medical treatment. We complete the petition and transport the individual to the hospital for evaluation. This is a very time-consuming process for our officers and has been steadily increasing since 2013.



Last year's report showed that calls for service had been rising. From 2017 to 2018 they continued to rise however not as steeply as from 2016 to 2017. This year there has been a decline in calls for service.



Arrests and traffic enforcement are not only indicators of the presence of violations, but are also a reflection of the motivation and professionalism of our officer. The adult arrest have decreased and juvenile arrest are relatively the same with only a slight increase.

